

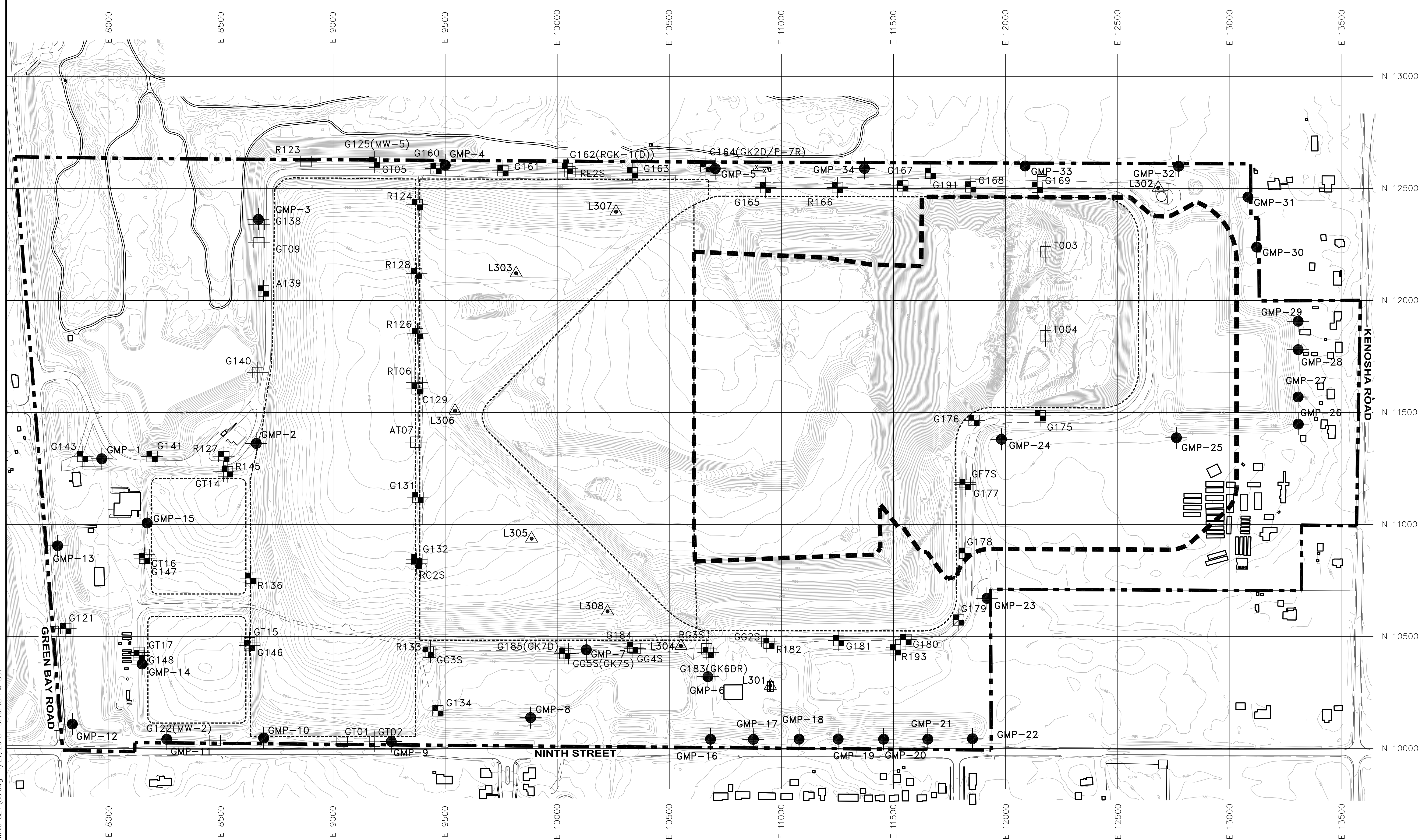
**LEGEND**

- APPROXIMATE PROPOSED FACILITY BOUNDARY
- - - PROPOSED EXPANSION WASTE AREA
- EXISTING PERMITTED LIMIT OF WASTE AREAS

- G178 EXISTING SHALLOW DRIFT MONITORING WELL
- RE2S EXISTING INTRATILL SEDIMENT MONITORING WELL
- GMP-1 EXISTING LANDFILL GAS MONITORING PROBE
- L301 EXISTING LEACHATE MONITORING POINT

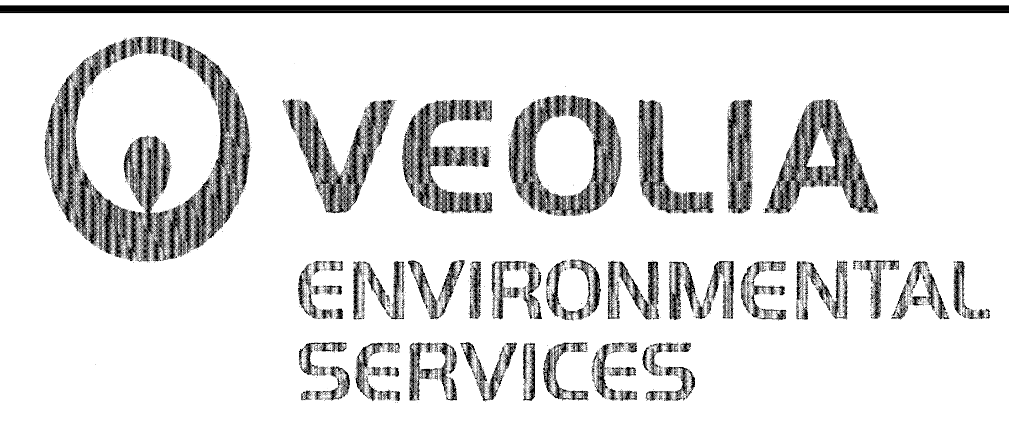
**NOTES:**

1. EXISTING CONTOURS DEVELOPED FROM SITE AERIAL TOPOGRAPHIC SURVEY BY MARTINEZ CORPORATION ON 4/16/07.
2. FOR CLARITY, NOT ALL SITE FEATURES MAY BE SHOWN.
3. EXISTING LANDFILL GAS MONITORING PROBES DESIGNATED WITH A GMP PREFIX ON THIS DRAWING CORRESPOND TO BORING LOGS AND/OR AS-BUILT DIAGRAMS IN APPENDIX G WHICH ARE DESIGNATED WITH EITHER A GP, MP, OR GMP PREFIX.



T:\AutoCAD\Projects\122150\dwg\Geology\FINAL DRAWING SET\05.dwg 1/21/2010 3:10:40 PM CST

REV. NO.	DATE	DESCRIPTION



**VEOLIA E.S. ZION LANDFILL-SITE 2 EAST EXPANSION**  
**CITY OF ZION, ILLINOIS**

**EXISTING GROUNDWATER, LANDFILL GAS, AND LEACHATE MONITORING NETWORK**

PROJ. NO.:	122150	DATE:	FEBRUARY 2010
DESIGNED BY:	MNF	DRAWING NO.:	<b>G5</b>
DRAWN BY:	BWM		
CHECKED BY:	DJD		
APPROVED BY:	DAM		
			5 OF 28 SHEETS