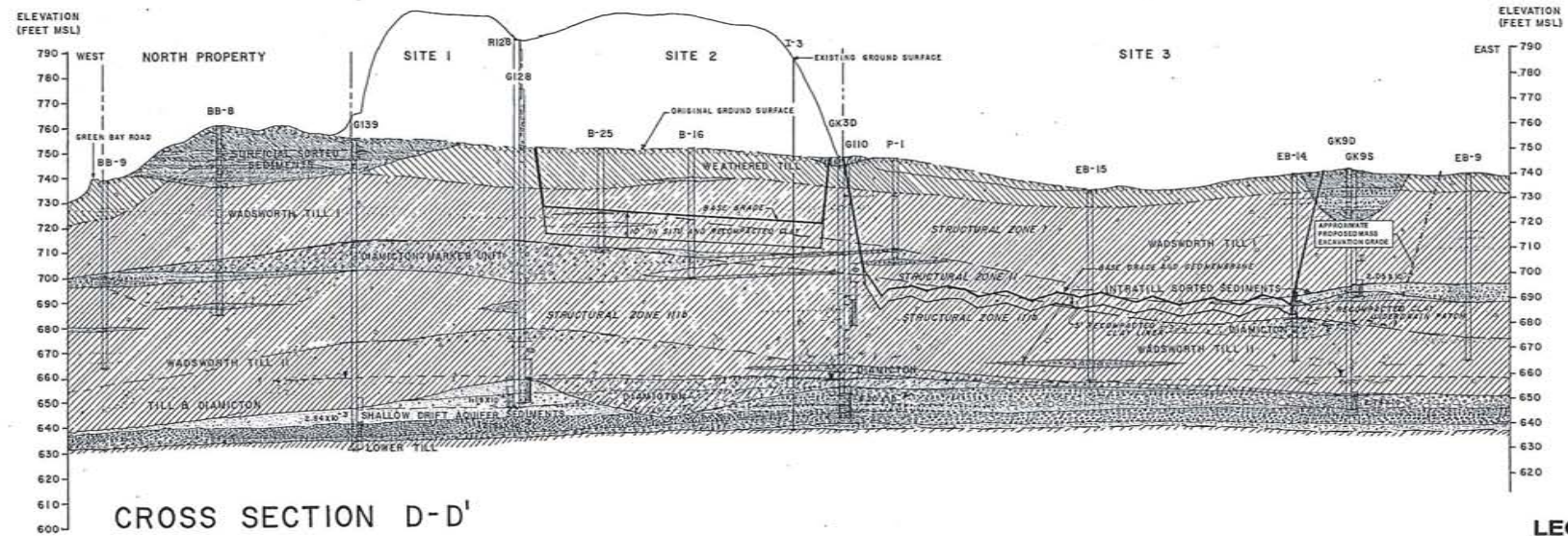


**KEY MAP**  
NOT TO SCALE



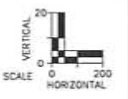
**CROSS SECTION D-D'**

**LEGEND**

- APPROXIMATE PROPOSED FACILITY BOUNDARY
- - - PROPOSED EXPANSION WASTE AREA
- EXISTING PERMITTED LIMIT OF WASTE AREAS
- APPROXIMATE PROPOSED MASS EXCAVATION GRADES
- EB-9 ↓ BORING LOCATION

**NOTE**

1. THIS CROSS SECTION WAS PREPARED FOR THE 1995 EXPANSION APPLICATION BY JENNINGS & STAUROWSKY CONSULTING HYDROGEOLOGISTS ON BEHALF OF BROWNING-FERRIS INDUSTRIES OF ILLINOIS, INC. IT HAS BEEN INCLUDED WITHIN THIS DRAWING SET FOR INFORMATIONAL PURPOSES DUE TO ITS PROXIMITY TO THE PROPOSED HORIZONTAL EXPANSION AREA AND TO DEPICT RESULTS OF PRIOR INVESTIGATIONS BENEATH THE VERTICAL EXPANSION AREA. IN AREAS WHERE THIS CROSS SECTION CUTS THROUGH THE PROPOSED HORIZONTAL EXPANSION AREA, THE APPROXIMATE PROPOSED MASS EXCAVATION GRADES HAVE BEEN ADDED.



T:\MISC\DWG\Projects\18122150\Map\G11\G11.dwg 1/7/2010 3:53:32 PM CST

REV. NO.	DATE	DESCRIPTION



**VEOLIA E.S. ZION LANDFILL-SITE 2 EAST EXPANSION**  
CITY OF ZION, ILLINOIS

**1995 EXISTING FACILITY GEOLOGICAL CROSS SECTION (D-D')**

PROJ. NO.:	122150	DATE:	FEBRUARY 2010
DESIGNED BY:	MNF	DRAWING NO.:	<b>G14</b>
DRAWN BY:	PEL		
CHECKED BY:	DJD		
APPROVED BY:	DAM		
			14 OF 28 SHEETS