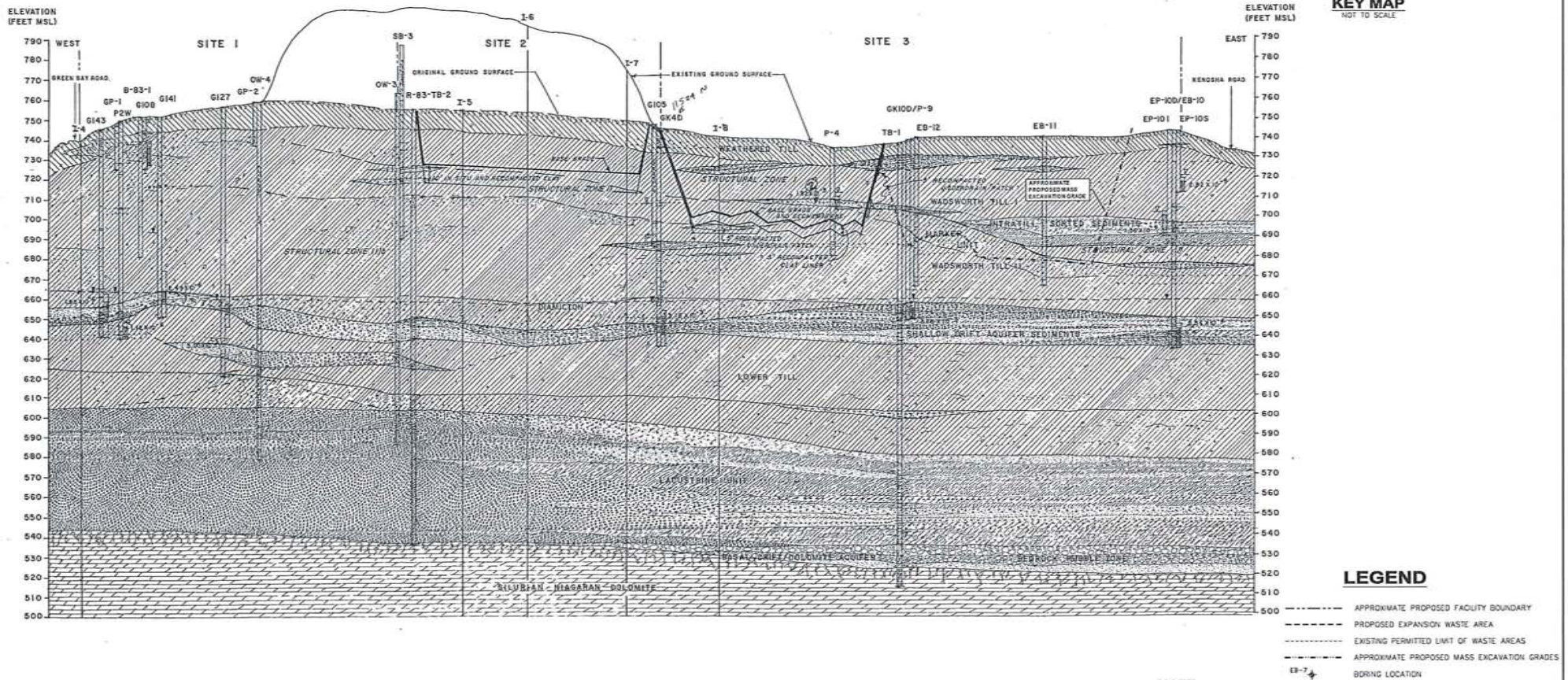


CROSS SECTION E - E'



T:\ms040\Projects\12710\Drawings\G15\G15.dwg 1/27/2000 3:54:09 PM CST



**VEOLIA E.S. ZION LANDFILL-SITE 2 EAST EXPANSION
CITY OF ZION, ILLINOIS**

1995 EXISTING FACILITY GEOLOGICAL CROSS SECTION (E - E')

PROJ. NO.:	122150	DATE:	FEBRUARY 2010
DESIGNED BY:	MMF	DRAWING NO.:	G15
DRAWN BY:	FEL		
CHECKED BY:	DJD		
APPROVED BY:	DAM		15 OF 28 SHEETS

REV. NO.	DATE	DESCRIPTION