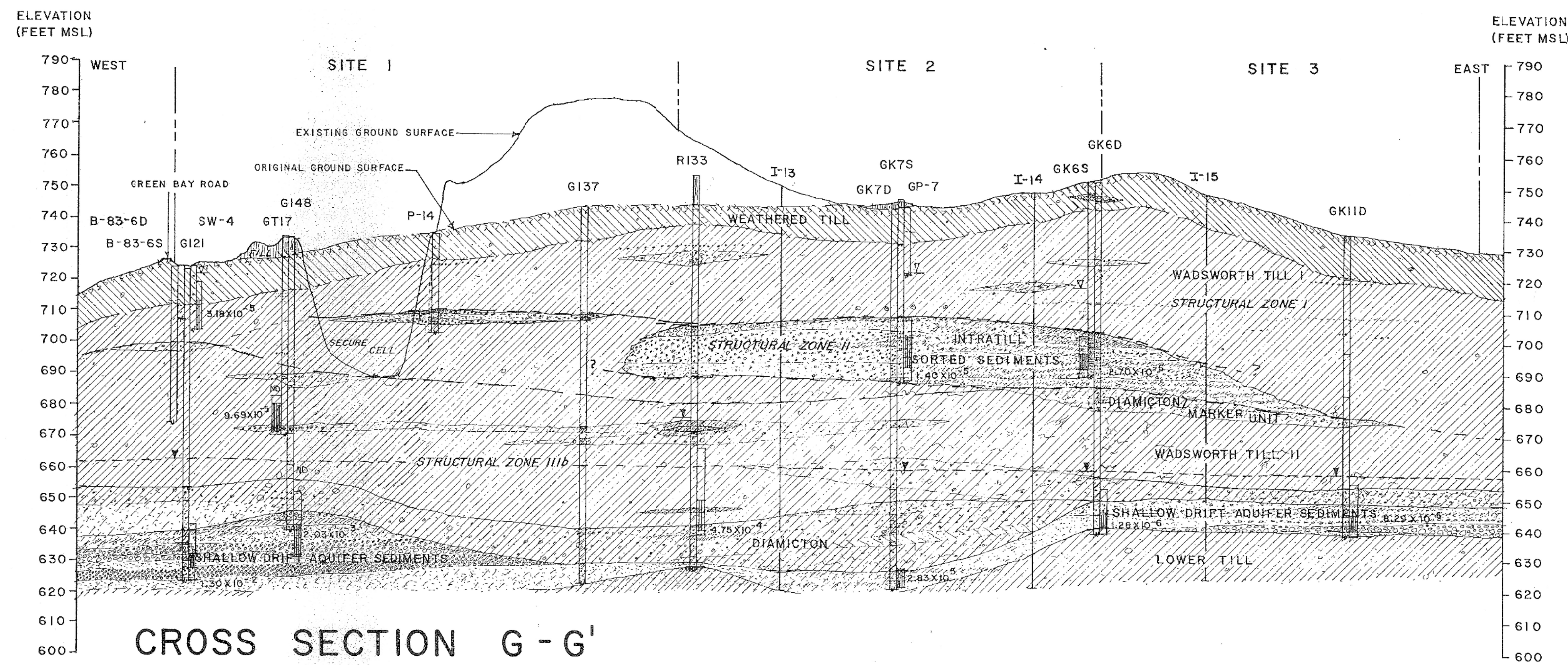


KEY MAP
NOT TO SCALE



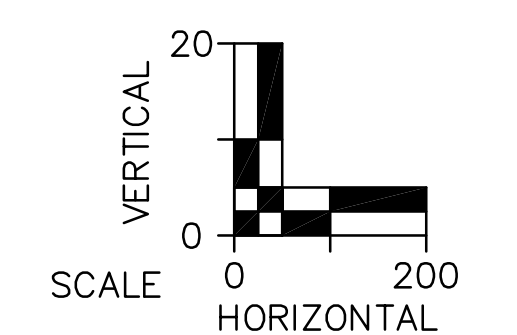
CROSS SECTION G - G'

LEGEND

- APPROXIMATE PROPOSED FACILITY BOUNDARY
- PROPOSED EXPANSION WASTE AREA
- EXISTING PERMITTED LIMIT OF WASTE AREAS
- EB-7 ◊ BORING LOCATION

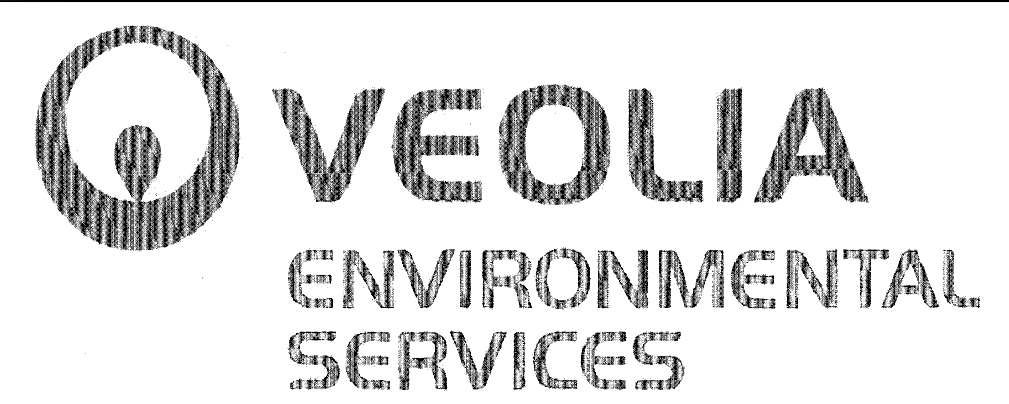
NOTE

1. THIS CROSS SECTION WAS PREPARED FOR THE 1995 EXPANSION APPLICATION BY JENNINGS & STAUROWSKY CONSULTING HYDROGEOLOGISTS ON BEHALF OF BROWNING-FERRIS INDUSTRIES OF ILLINOIS, INC. IT HAS BEEN INCLUDED WITHIN THIS DRAWING SET FOR INFORMATIONAL PURPOSES DUE TO ITS PROXIMITY TO THE PROPOSED HORIZONTAL EXPANSION AREA AND TO DEPICT RESULTS OF PRIOR INVESTIGATIONS BENEATH THE VERTICAL EXPANSION AREA.



T:\AutoCAD\Projects\122150.dwg\Geology\FINAL DRAWING SET\G17.dwg 1/21/2010 3:56:29 PM CST

REV. NO.	DATE	DESCRIPTION



**VEOLIA E.S. ZION LANDFILL-SITE 2 EAST EXPANSION
CITY OF ZION, ILLINOIS**

1995 EXISTING FACILITY GEOLOGICAL CROSS SECTION (G - G')

PROJ. NO.:	122150	DATE:	FEBRUARY 2010
DESIGNED BY:	MNF	DRAWING NO.:	G17
DRAWN BY:	PEL		
CHECKED BY:	DJD		
APPROVED BY:	DAM		