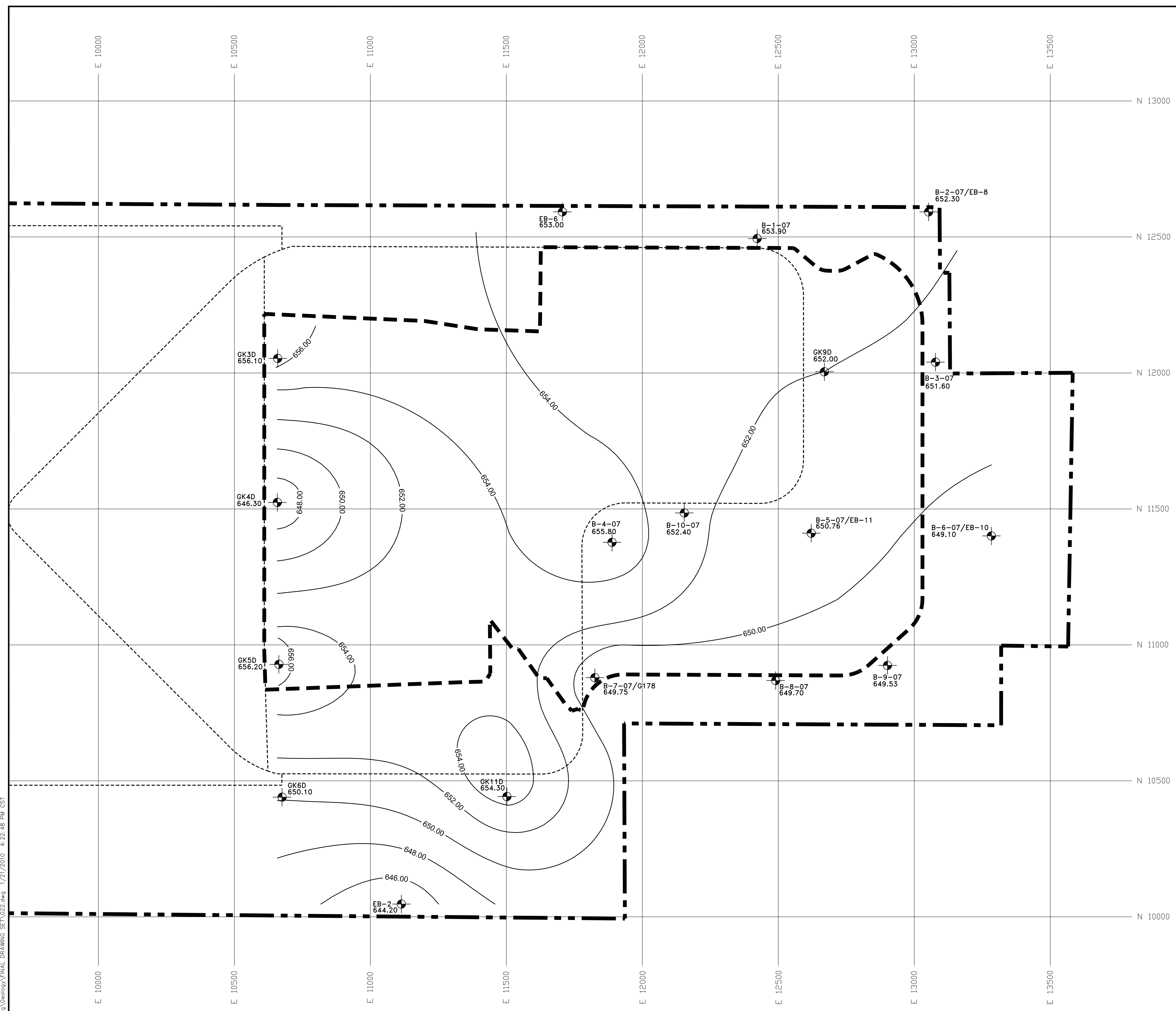


**LEGEND**

- APPROXIMATE PROPOSED FACILITY BOUNDARY
- PROPOSED EXPANSION WASTE AREA
- EXISTING PERMITTED LIMIT OF WASTE AREAS
- 653.00 INTERPOLATED ELEVATION CONTOUR
- BORING LOCATION WITH TOP ELEVATION OF SHALLOW DRIFT



- NOTES:**
1. SEE BORING LOGS FOR ELEVATIONS AND COORDINATES.
  2. CONTOUR INTERVAL = 2 FEET.
  3. THE COMPLETE PROPOSED FACILITY BOUNDARY IS NOT SHOWN ON THIS DRAWING, FOR A FULL PROPOSED FACILITY BOUNDARY DESCRIPTION REFER TO APPENDIX D.
  4. IN ORDER TO UTILIZE THIS DRAWING FOR THE CREATION OF G21 (ISOPACH OF THE WADSWORTH FORMATION), ONLY CONTINUOUSLY SAMPLED BORINGS THROUGH THE ENTIRE THICKNESS OF THE WADSWORTH FORMATION AND INTO THE SHALLOW DRIFT WERE USED TO PREPARE THIS DRAWING.

REV. NO.	DATE	DESCRIPTION



**VEOLIA E.S. ZION LANDFILL-SITE 2 EAST EXPANSION  
CITY OF ZION, ILLINOIS**

**TOP ELEVATION OF THE SHALLOW DRIFT**

PROJ. NO.:	122150	DATE:	FEBRUARY 2010
DESIGNED BY:	MNF	DRAWING NO.:	<b>G22</b>
DRAWN BY:	PEL		
CHECKED BY:	DJD		
APPROVED BY:	DAM		
			22 OF 28 SHEETS

E:\veol\cadd\project\122150\Geology\FINAL DRAWING SET\G22.dwg 1/21/2010 4:22:48 PM CST