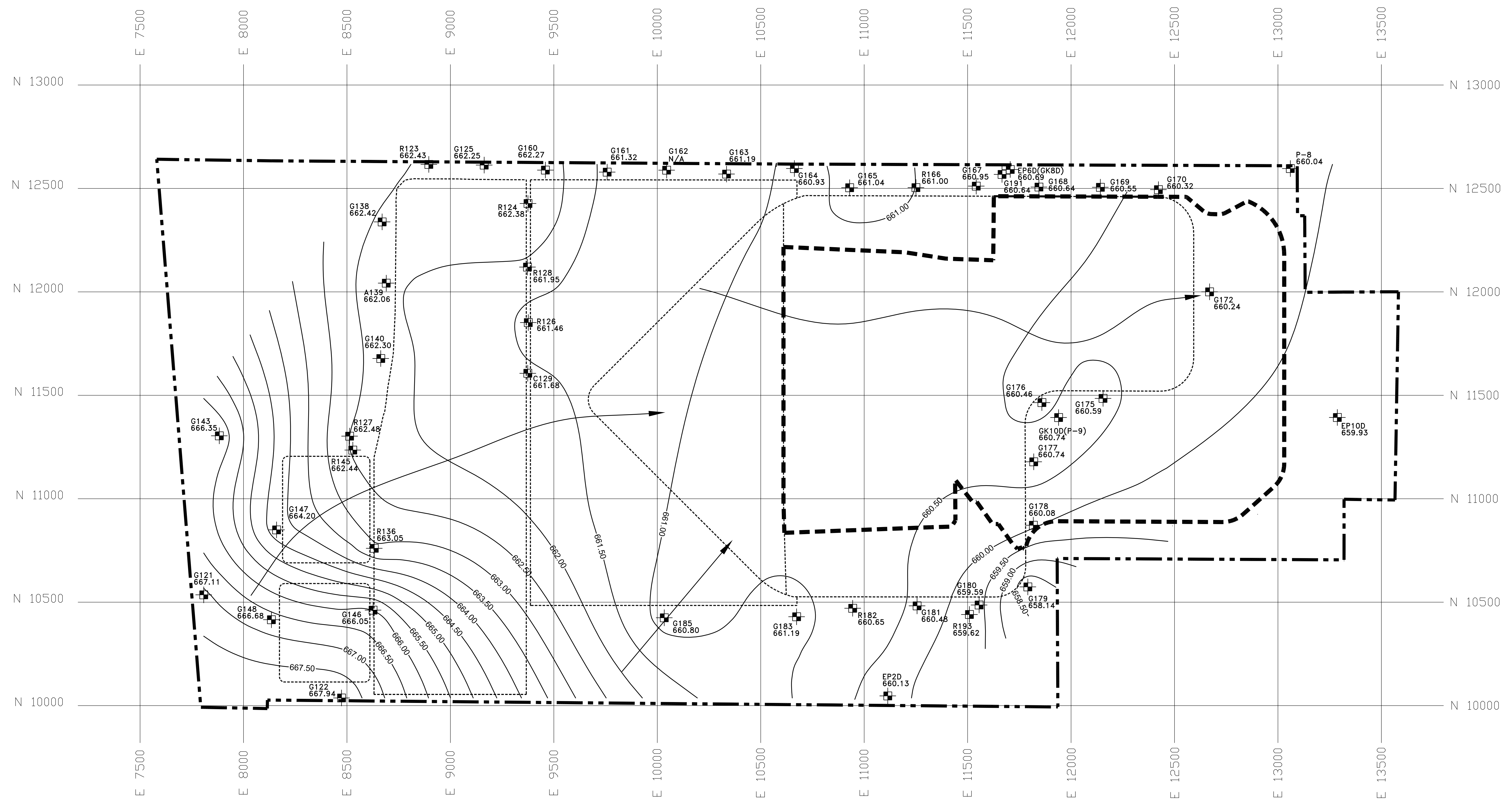


GRAPHIC SCALE  
200' 0 200'



**LEGEND**

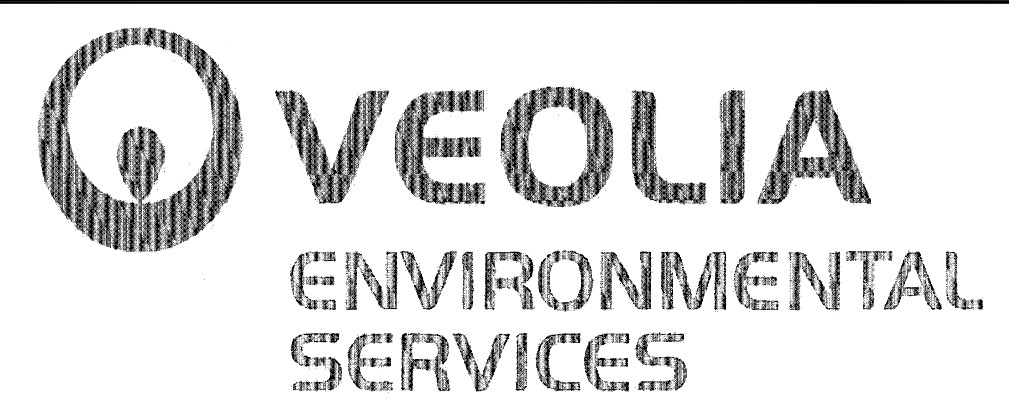
- APPROXIMATE PROPOSED FACILITY BOUNDARY
- PROPOSED EXPANSION WASTE AREA
- EXISTING PERMITTED LIMIT OF WASTE AREAS
- INTERPOLATED POTENTIOMETRIC CONTOUR
- GROUNDWATER FLOW DIRECTION
- MONITORING WELL/PIEZOMETER LOCATION WITH POTENTIOMETRIC LEVEL

**NOTES:**

1. SEE MONITORING WELL AND PIEZOMETER AS-BUILTS FOR ELEVATIONS AND COORDINATES.
2. WATER LEVEL MEASUREMENTS WERE TAKEN ON JANUARY 23, 2008.
3. CONTOUR INTERVAL = 0.5 FOOT.

I:\AutoCAD\Projects\122150\dwg\Geology\FINAL DRAWING SET\G27.dwg 1/21/2010 5:02:18 PM CST

REV. NO.	DATE	DESCRIPTION



**VEOLIA E.S. ZION LANDFILL-SITE 2 EAST EXPANSION  
CITY OF ZION, ILLINOIS**

**POTENTIOMETRIC MAP OF THE SHALLOW  
DRIFT AQUIFER - JANUARY 2008**

PROJ. NO.:	122150	DATE:	FEBRUARY 2010
DESIGNED BY:	MNF	DRAWING NO.:	<b>G27</b>
DRAWN BY:	BWM		
CHECKED BY:	DJD		
APPROVED BY:	DAM		
			27 OF 28 SHEETS